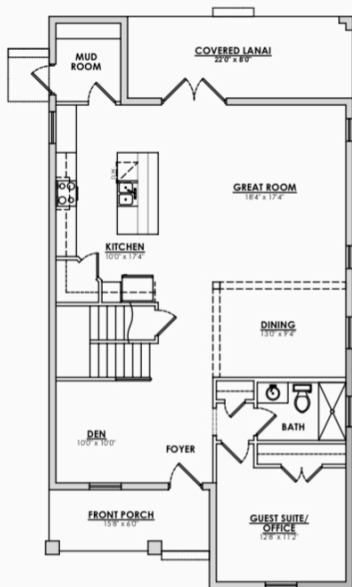
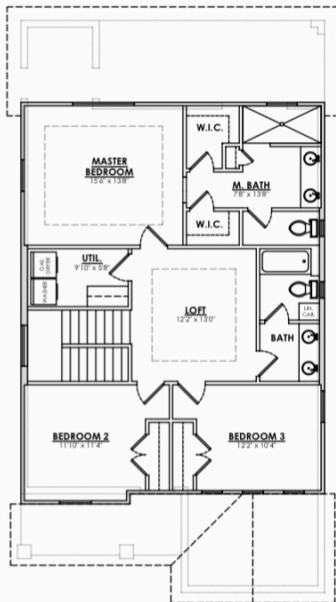




MIDDLE BAY
HOMES
BUILDING EASIER



MAIN FLOOR PLAN



2ND LEVEL FLOOR PLAN

1ST LEVEL LIVING AREA = 1,333 SQ. FT.
2ND LEVEL LIVING AREA = 1,074 SQ. FT.
TOTAL LIVING AREA = 2,407
FRONT PORCH = 94
COVERED LANAI = 176
TOTAL UNDER ROOF = 2,677