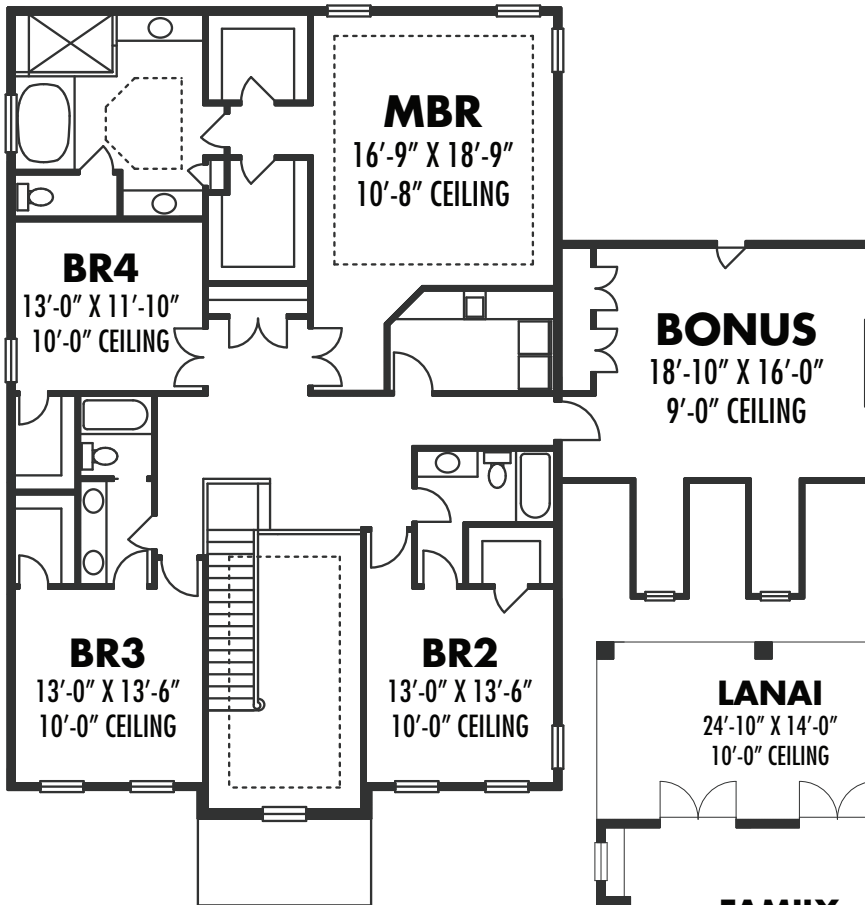


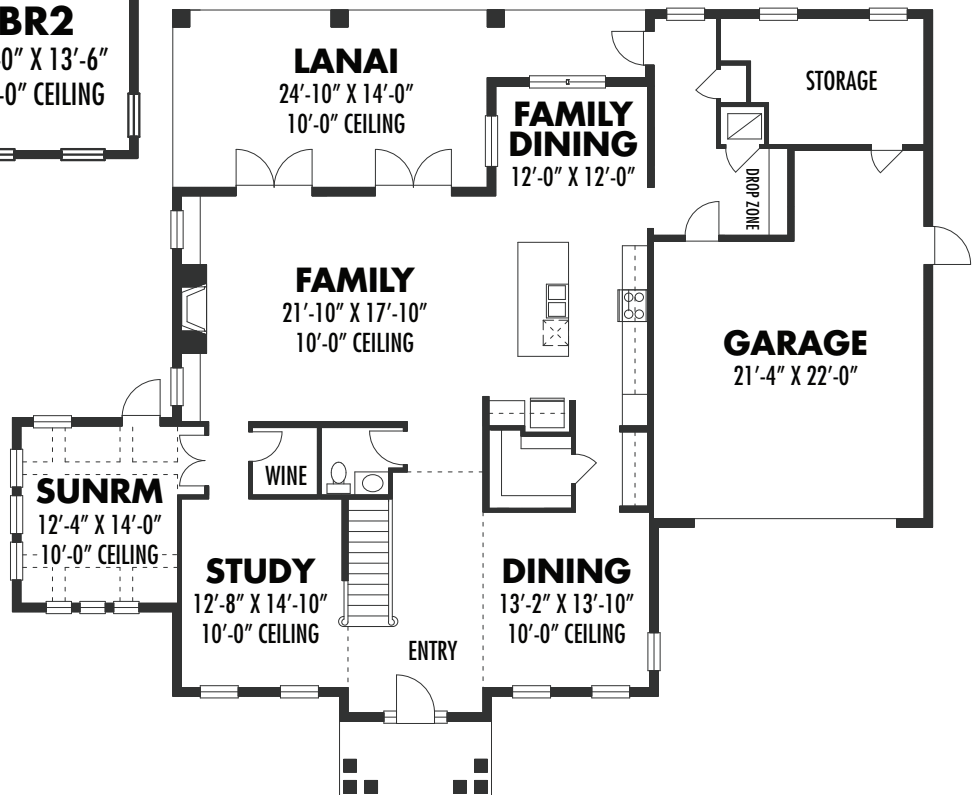


MIDDLE BAY
— HOMES —
BUILDING EASIER

UPPER FLOOR PLAN



MAIN FLOOR PLAN



4301

4 Bedroom + Bonus Room
3.5 Bathrooms
2 Car Garage
4301 SF Living Area

In the interest of continuous improvement, Middle Bay Homes reserves the right to change or modify floor plans and elevations without prior notice or obligation. These are artist renderings with approximate dimensions. (CRC1332228) ©Copyright licensed 2019 to Middle Bay Homes. All Rights Reserved.

