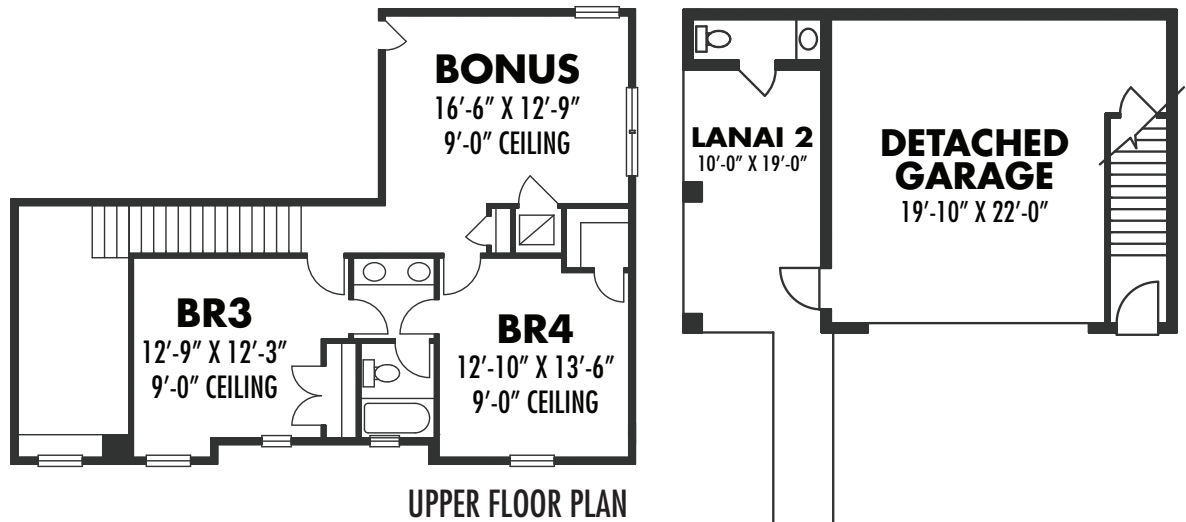
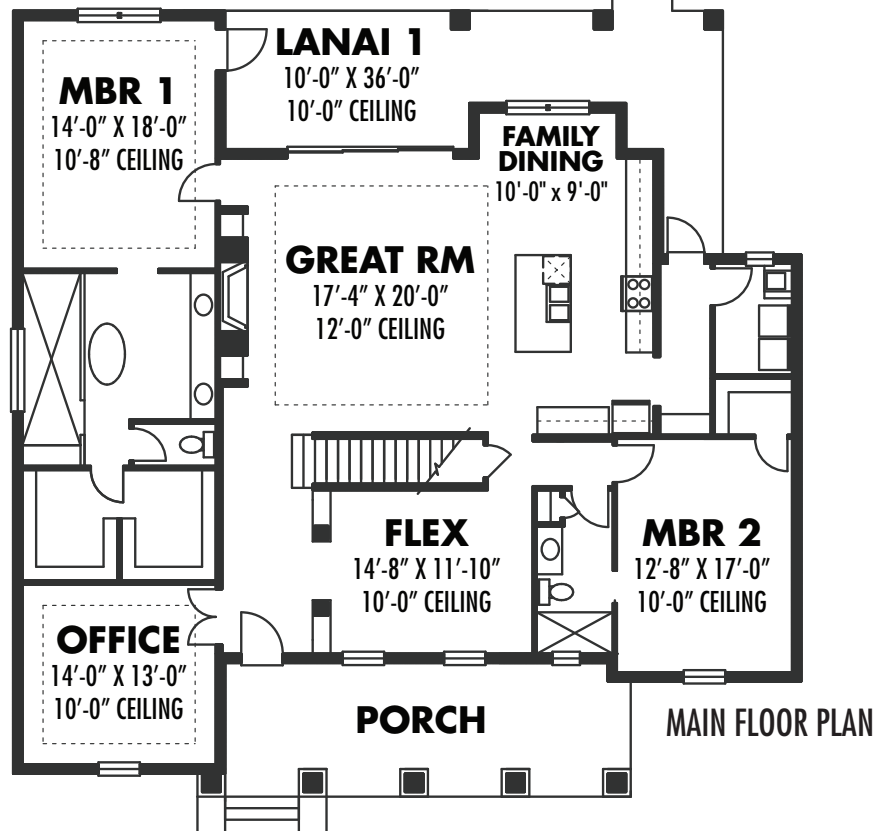
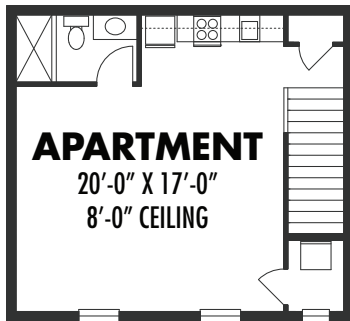




**MIDDLE BAY**  
— HOMES —  
BUILDING EASIER



UPPER FLOOR PLAN - GARAGE



**3165**

4 Bedroom + Bonus Room

3.5 Bathrooms

Detached Garage + Apartment

3165 SF Living Area

In the interest of continuous improvement, Middle Bay Homes reserves the right to change or modify floor plans and elevations without prior notice or obligation. These are artist renderings with approximate dimensions. (CRC1332228) ©Copyright licensed 2019 to Middle Bay Homes. All Rights Reserved.

